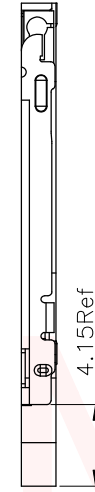
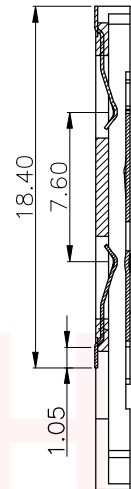
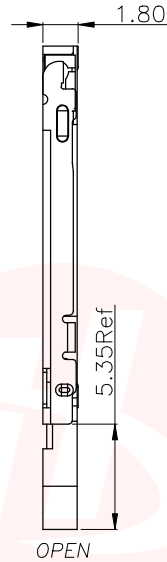
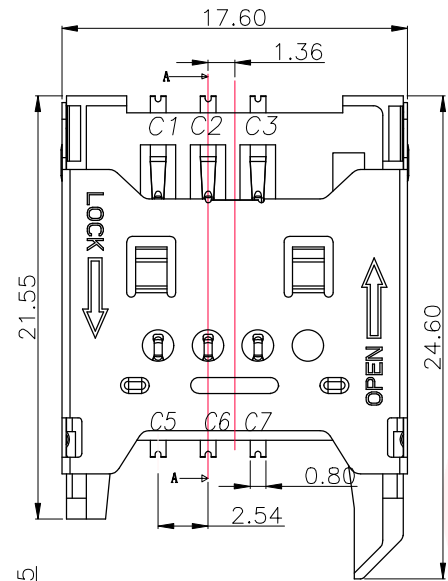




REV.	ECN NO OR DESCRIPTION	REVISED	DATE



SECTION A-A

LOCK

SPECIFICATIONS:

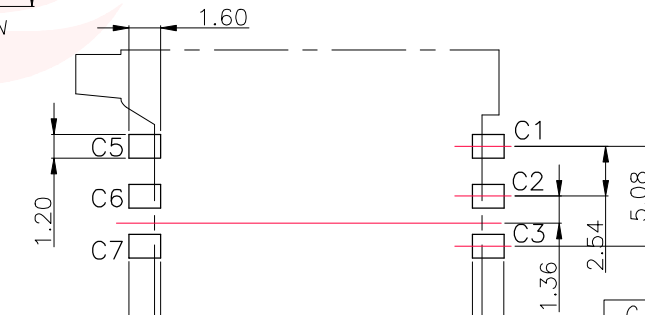
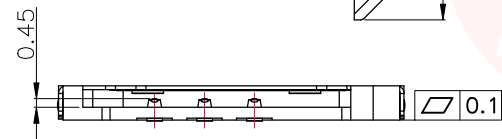
1.ELECTRICAL CHARACTERISTICS

- 1-1.CONTACT RESISTANCE: 80 MILLIOHMS MAX.
- 1-2.INSULATION RESISTANCE: 1,000 MEGOHMS MIN.
- 1-3.DIELECTRIC WITHSTANDING VOLTAGE: 500V AC FOR 1 MINUTE.

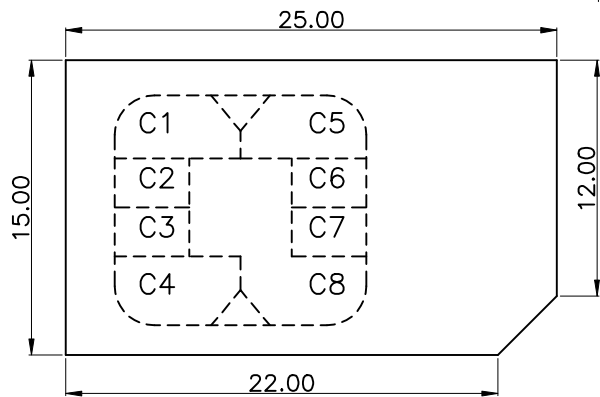
2.MECHANICAL CHARACTERISTICS

- 2-1.RETENTION FORCE:MIN.100GF/PIN
- 2-2.DURABILITY: 5,000 CYCLES
- 3.ROHS 2002/95/EC COMPLIANT.

pin no.	name
C1	vcc of sim
C2	rst of sim
C3	clk of sim
C5	gnd of sim
C6	vpp of sim
C7	I/O of sim
C4/C8	n/a



RECOMMENDED PCB LAYOUT
GENERAL TOLERANCE ±0.05



C	DESCRIPTION	QTY	MATERIAL	PLATING & COLOR
C	SHELL	1	STAINLESS STEEL 0.20t	Ni PLATING
B	CONTACT	6	COPPER ALLOY 0.15t	Gold plated on contact area Tin plated on Solder tail All over Nickel Plated .
A	HOUSING	1	HIGH-TEMPERATURE PLASTIC UL94-V0	BLACK

UNLESS OTHERWISE SPECIFIED TOLERANCES

东莞市汉博电子科技有限公司
DONGGUAN HANBO TECHNOLOGY CO., LTD

DECIMALS:		ANGLES:		TITLE	
X	:±0.5	X	:±2°	DWN	xiong SIM-209
X.X	:±0.30	X.X	:±1°	CHKD	lee SCALE:1:1 UNIT: mm
X.XX	:±0.20			APVD	wang SIZE: A4 SHEET:10F 1 REV: A4
CUSTOMER COPY					